


LEGEND  = KEY PRODUCT CHARACTERISTICS

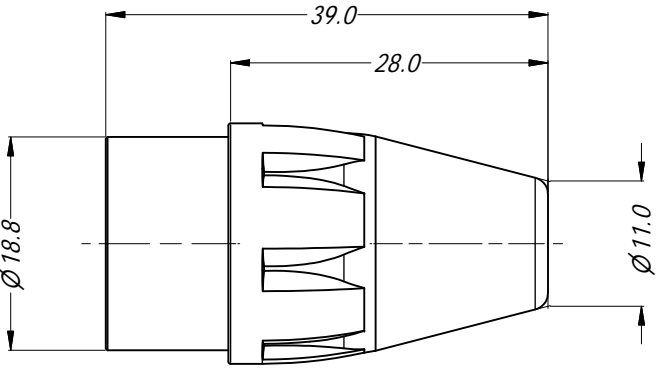
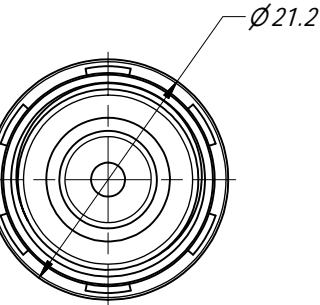
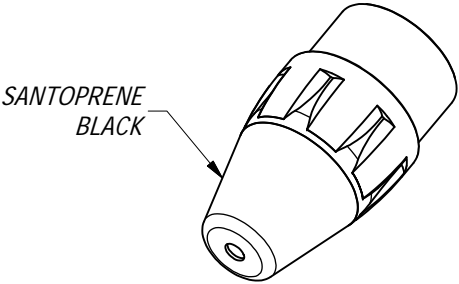
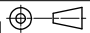


TABLE OF PART NUMBERS

AX-BOOT-1	BROWN
AX-BOOT-2	RED
AX-BOOT-3	ORANGE
AX-BOOT-4	YELLOW
AX-BOOT-5	GREEN
AX-BOOT-6	BLUE
AX-BOOT-7	VIOLET
AX-BOOT-8	GREY
AX-BOOT-9	WHITE
AX-BOOT	BLACK
AX-BOOT-CLR	CLEAR



3D VIEW (1 : 1)

UNLESS OTHERWISE SPECIFIED TOLERANCE TO BE		THIS DOCUMENT IS THE PROPERTY OF AMPHENOL AUSTRALIA PTY. LTD. . NO PART THEREOF MAY BE REPRODUCED AND USED WITHOUT THE PRIOR WRITTEN CONSENT OF THE OWNER.				<b>Amphenol</b> Amphenol Australia Pty.Ltd, 22 Industry Blvd Carrum Downs, VIC 3201	
LINEAR	ANGULAR	MATERIAL: <b>NORYL &amp; SANTOPRENE</b>	DRN:	T.N	DATE:	18/08/15	TITLE:
X ± 0.5	X' ± 1		CKD:		DATE:	18/08/15	<b>BOOT AX SERIES</b>
X.X ± 0.1	X.X' ± 30'		APP'D:	P.M	DATE:	18/08/15	
X.XX ± 0.05	X.XX' ± 15'	BREAK ALL SHARP EDGES AND REMOVE ALL BURRS	FINISH:		SCALE:	<b>3:2</b>	SIZE:
DO NOT SCALE		DIMENSIONS IN MILLIMETRES		 THIRD ANGLE PROJECTION		PART No: <b>REFER TABLE</b>	
						DRAWING No. <b>50440036-530</b>	REV <b>2</b>
							SHEET <b>/</b>