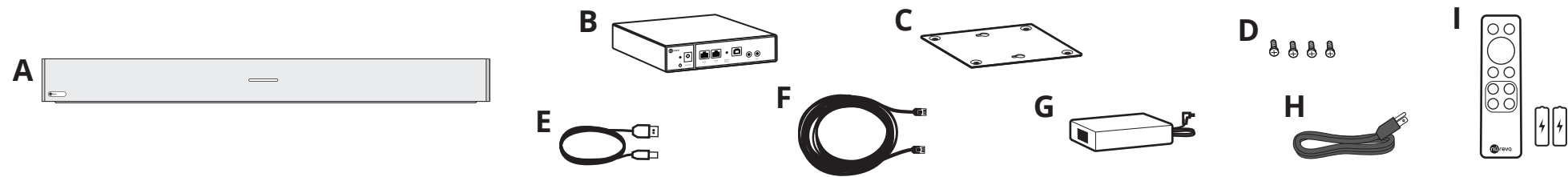


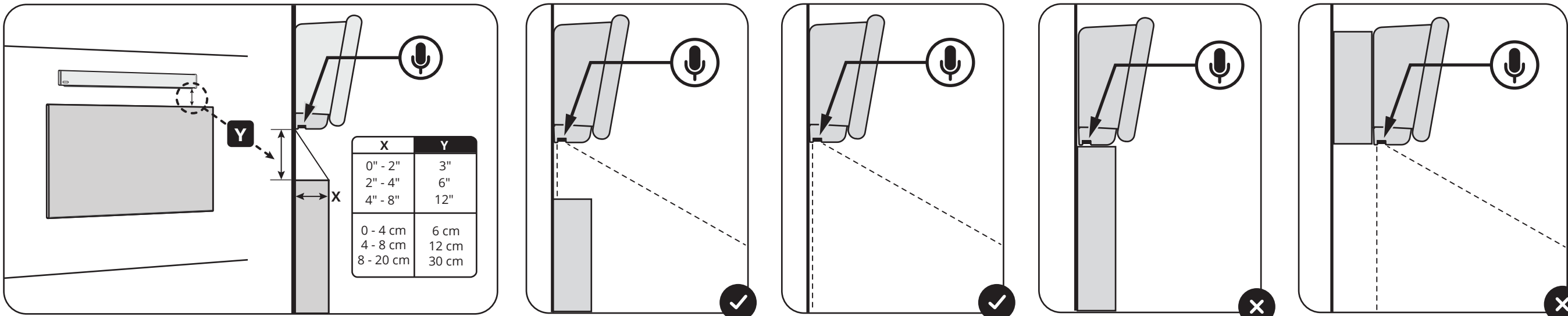
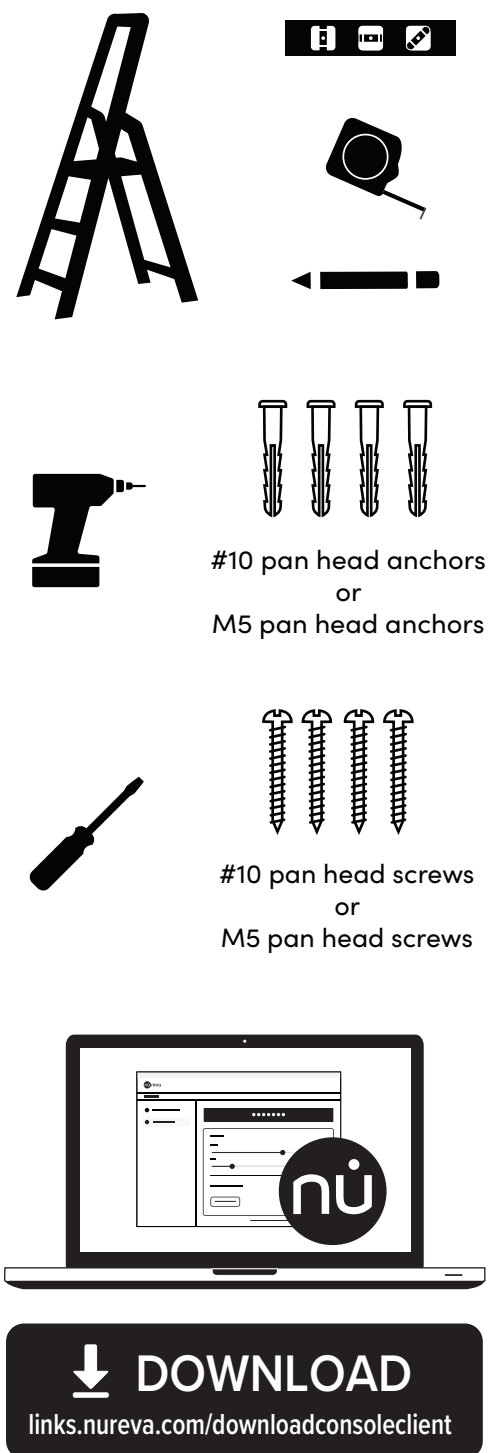


# HDL300 and DUAL HDL300 QUICK START GUIDE

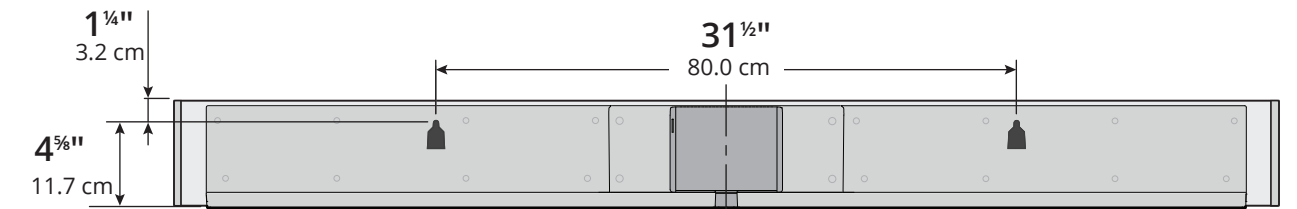
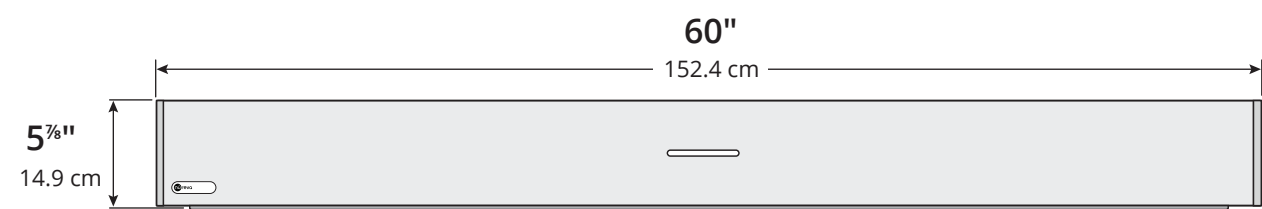
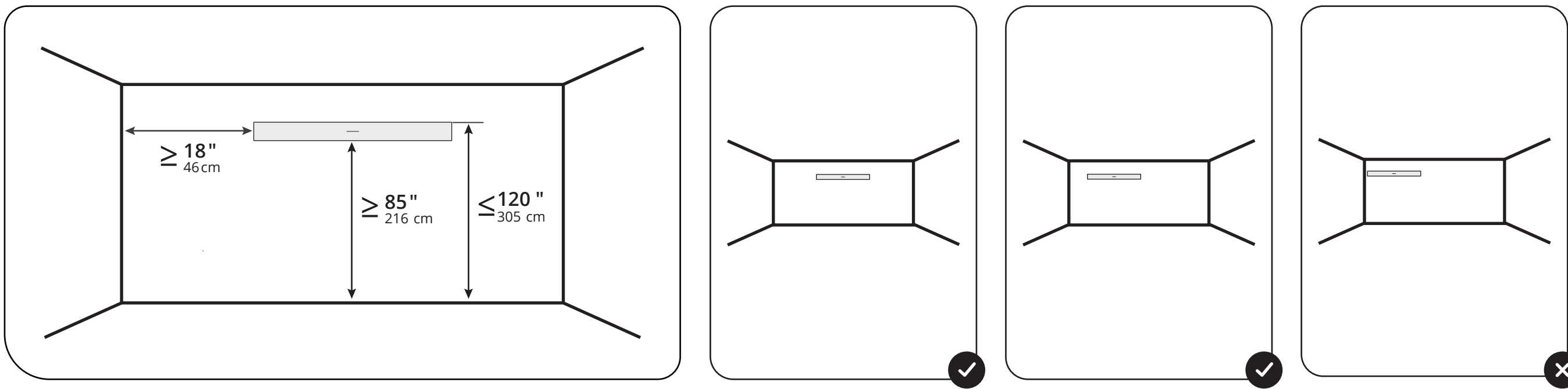
## PACKAGE CONTENTS



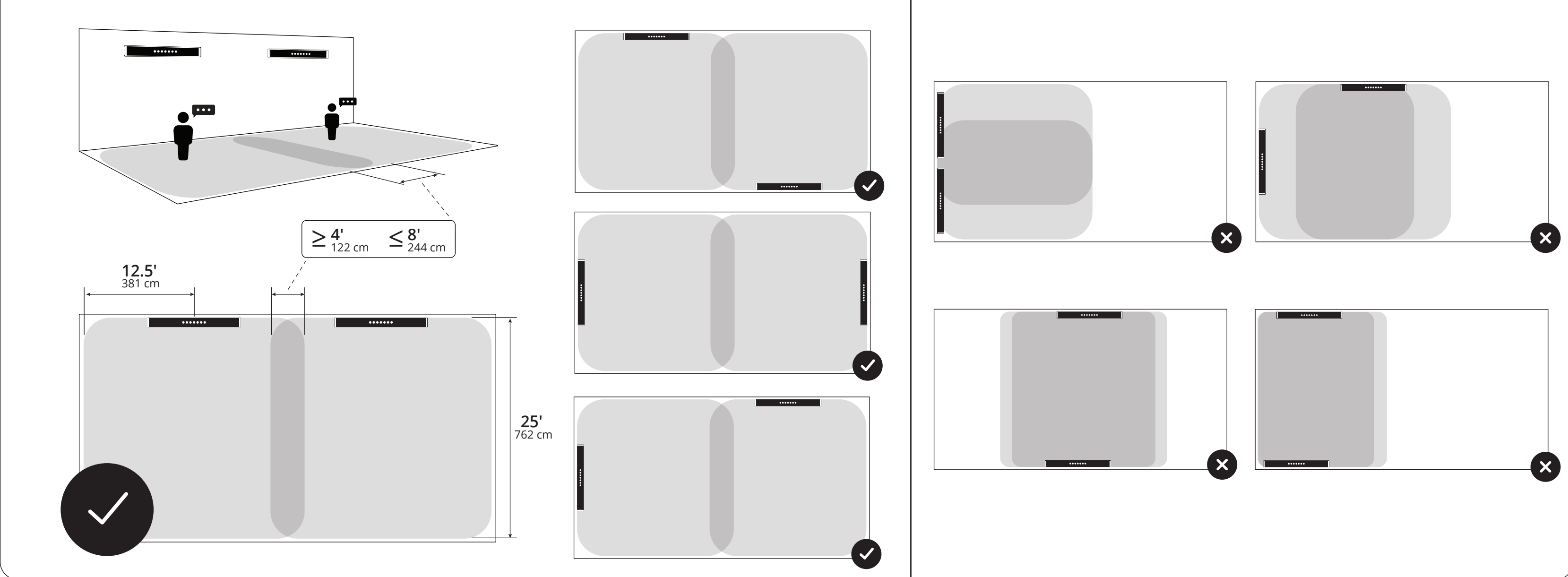
## YOU WILL NEED



X	Y
0" - 2"	3"
2" - 4"	6"
4" - 8"	12"
0 - 4 cm	6 cm
4 - 8 cm	12 cm
8 - 20 cm	30 cm



## DUAL HDL300



## REMOTE CONTROL

