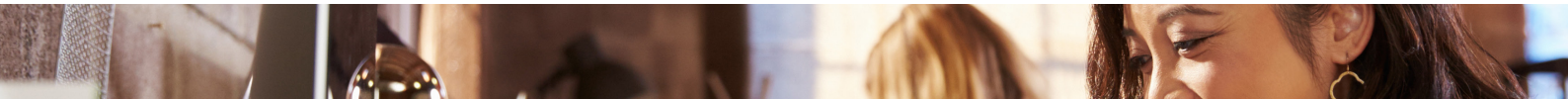


Roadworx Sound Masking Solutions RWSM-C2-2CH.



Compact Sound Masking System



The RWSM-C2 is a complete sound masking system packed with advanced technologies yet is simple to use with its touch screen interface. Tailored for small and medium offices of approximately 465 m² or less, the RWSM-C2 provides optimum sound masking performance at a reasonable price.



The RWSM-C2 works with the complete range of Roadworx sound masking speakers therefore allowing the system to be installed in virtually any office configurations: open offices, closed offices, meeting rooms, ceiling tiles, open ceiling, raised floors, radiant metal ceilings, etc.

Desktop



Flush Mount



RWSM-C2-2CH.

Compact Sound Masking System



Each RWSM-C2 provides:

- Touch-screen user interface
- 1 or 2 speaker outputs (zones)
- Up to 12 speakers per zone
- Independent settings for each zone
 - Volume adjustment
 - Bass/treble adjustment
 - 12 pre-set equalizers to fit the sound environment
 - Adjustable ramp-up period
- Music/Paging
- Paging trigger to lower sound masking volume while paging
- Emergency mute relay
- 2-Level pass code locking
- Versatile enclosure with multiple configurations:
 - Desktop
 - Wall-Mount
 - Flush-Mount

Specifications		
Speaker Outputs (Zones)	RWSM-C2-2CH	RWSM-C2-1CH
Nb Outputs (Zones)	2	1
Max Nb Speakers/Output	12	12
Connector	2-pos. screw terminal	2-pos. screw terminal
Sound Masking		
Volume	±10dB with respect to selected pre-set equalizer	
Equalizer	12 pre-set equalizers to fit the sound masking environment and ±5dB Bass/Treble	
Volume Ramp-Up	User defined, 1 day to 4 weeks	
Music and Paging		
Input	1 (Stereo, ±1.5V range)	
Connector	3-pos. screw terminal (Left, Gnd, Right)	
Mixer	Independent for each zone	
Volume	0-100% in 1% step	
Equalizer	±5dB Bass/Treble	
Emergency Mute Relay		
Input	1	
Connector	2-pos. screw terminal, isolated	
Function	Mute sound masking (and music/paging if required), for UL2572 compliance	

RWSM-C2-2CH.

Compact Sound Masking System



Specifications		
Power	RWSM-C2-2CH	RWSM-C2-1CH
Rated Power	50W	25W
Operating Voltage	24V	24V
Connectivity	Barrel connector or 2-pos. screw terminal for wall-mount configuration	Barrel connector or 2-pos. screw terminal for wall-mount configuration
Physical		
Size	168mm x 124mm x 47mm (6 5/8" x 4 7/8" x 1 13/16")	
Weight	450g	
Mounting Configuration	Desktop, Wall-mount (with built-in key-holes), or Flush-mount*	
Warranty		
Warranty	5 years	
Certifications - ETL Listed 3191772		
UL 62368- Standard for Audio, Video and Similar Electronic Apparatus - Safety Requirements		
FCC - EN 55103-1&2 - Electromagnetic compatibility-Product family standard for audio, video, audio-visual and entertainment lighting control apparatus for professional use - Part 1: Emissions, Part 2: Immunity		
Related ASTM Standards		
ASTM E1374-06 (11) - Standard Guide for Open Office Acoustics and Applicable ASTM Standards		
ASTM E1573-09 - Standard Test Method for Evaluating Masking Sound in Open Office Using A-Weighted and One-Third Octave Band Sound Pressure Levels		
ASTM E1130-08 - Standard Test Method for Objective Measurement of Speech Privacy in Open Offices Using Articulation Index		
ASTM E2638 - Standard Test Method for Objective Measurement of Speech Privacy Provide by Closed Rooms		

*Can be installed directly in the wall or using a 3-Gang NEMA device box