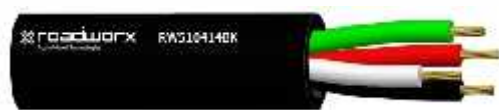


Speaker Cable

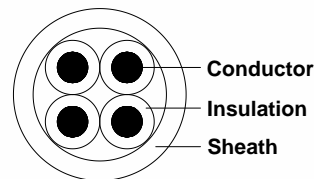
Part No: RW510414BK

Description	50/0.25BC x 4C + PVC Insulation + PVC Sheath 9.6mm
Applicable Standards	N/A
Suitable Applications	Used to make the electrical connection between loudspeakers and audio amplifiers.

Cable Construction Drawing



Cable Construction Relative Parts



Cable Description

Conductor 50/0.25+/-0.006BC

Insulation
Core: 4
Material: PVC
Colour: Black, Red, Green, White
Min. Thickness 0.51mm / Nom. Thickness 0.60mm / Nom. O.D 3.3+/-0.1mm

Material : PVC / Colour: Black

Sheath
Min. Thickness 0.64mm / Nom. Thickness ≥ 0.80 mm / Nom. O.D 9.6+/-0.2mm

Spark Voltage : 3000V a.c

Electrical Properties

Conductor Max D.C Resistance 7.98 ohm/km 20°C

Voltage Test: Core to Core 1000V a.c/1min

Physical Properties

Insulation Elongation	100%
Insulation Tensile Strength	13 N/mm ²
Sheath Elongation	100%
Sheath Tensile Strength	12 N/mm ²
Flame Test:	VW-1

Mechanical Properties

Operating Temperature Range	-15 to 70°C
Max. Recommended Pulling Tension	687N
Min. Bend Radius (install)	96mm
Approximate Mass	16.4kg/100m
Sheath Printing	ROADWORX RW510414 Speaker Cable, 4 conductor, 14AWG (meter marking)

Supply Information

Pack Size	Pack Type	Dimensions	Qty Per Pack	Qty Per Pallet
100m	Wooden Reel	W30 x H21.8cm	1R	
500m	Wooden Reel	W56 x H27.4cm	1R	

Document Change Record	Issue	Date	Prepared by	Approved By
	Sales	29-03-2013	LLS	Pent
Change History	Issue	Change		