

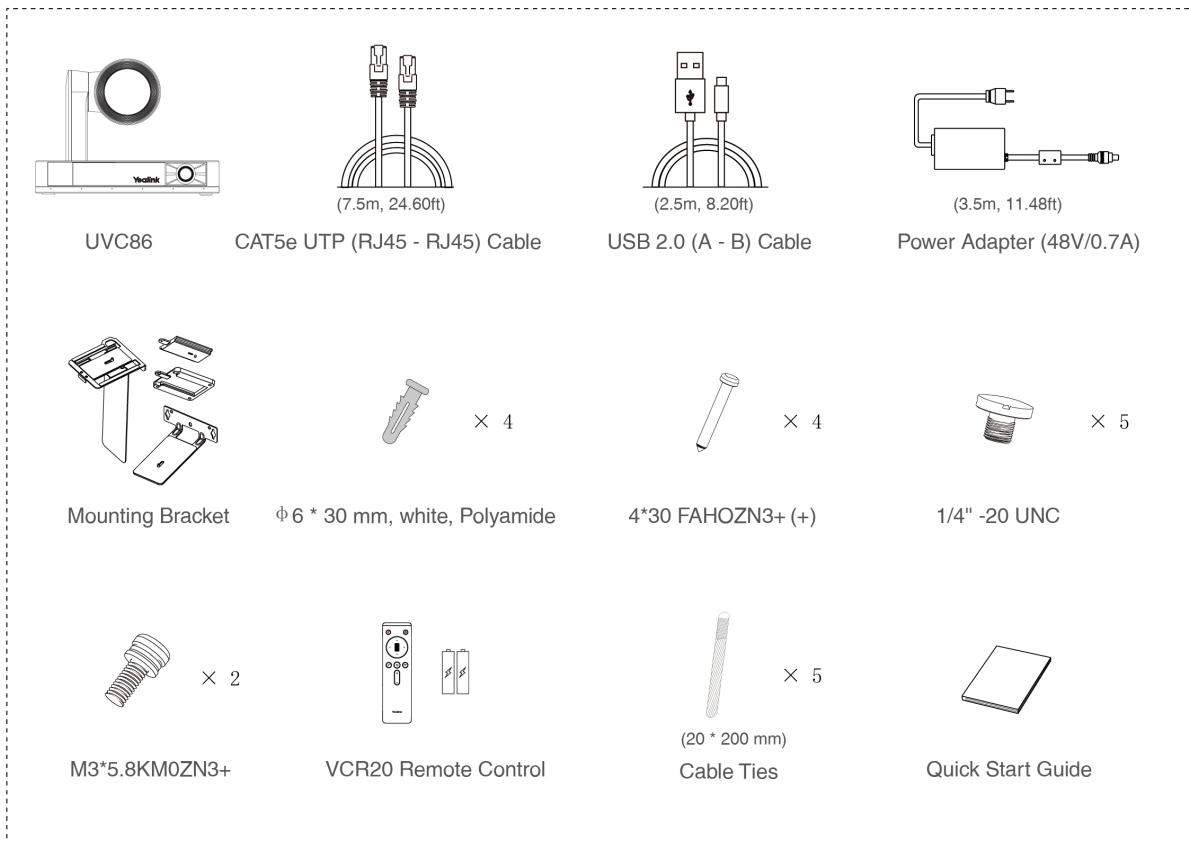
# MVC860-C5-713

For the operation video, please refer to [MVC860-C5-713 Unboxing](#).

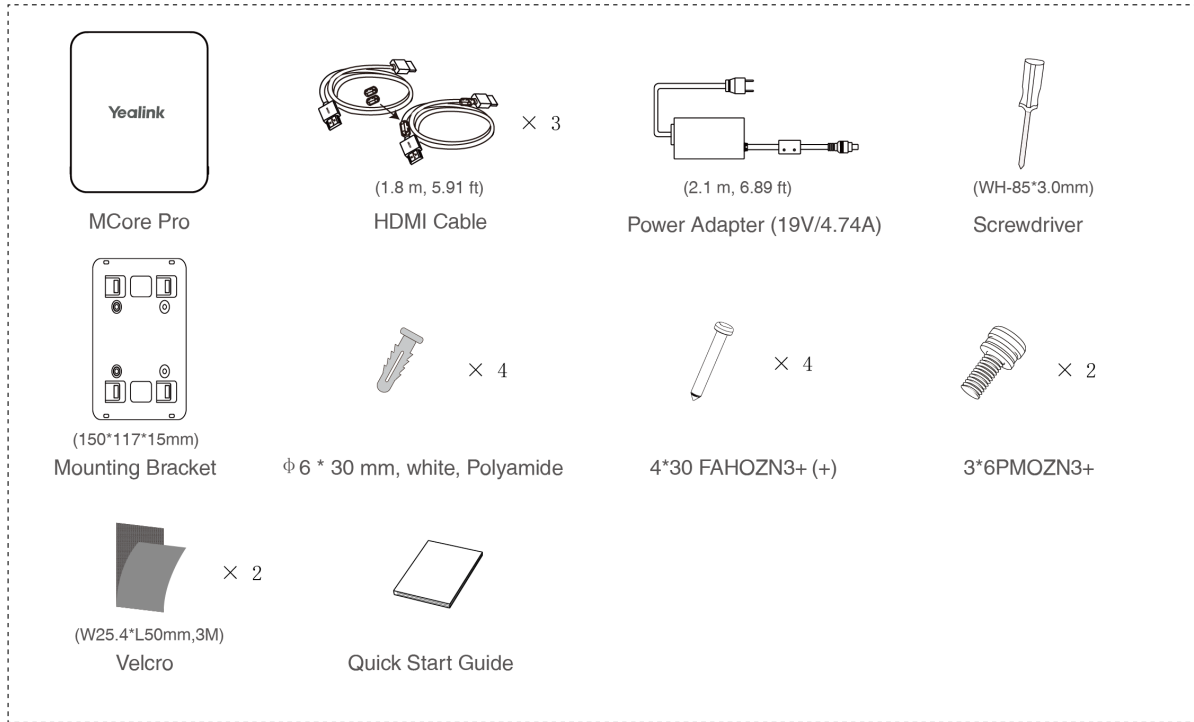
## Minimum Requirements

- A display connected to MCore Pro (not included).
- A Microsoft Teams Rooms or Skype® for Business account (not included).
- Wired network environment (not included).

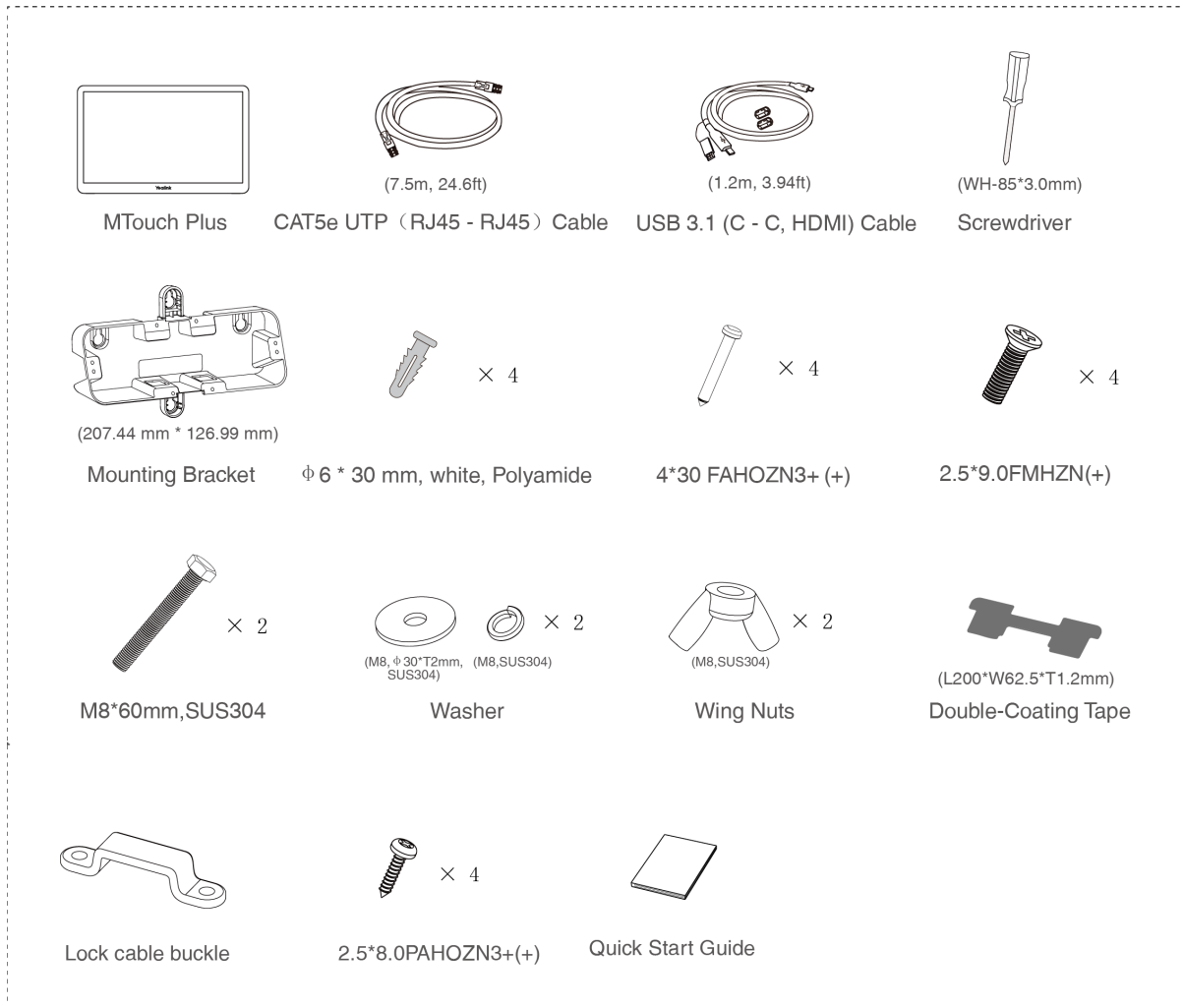
## Package Contents



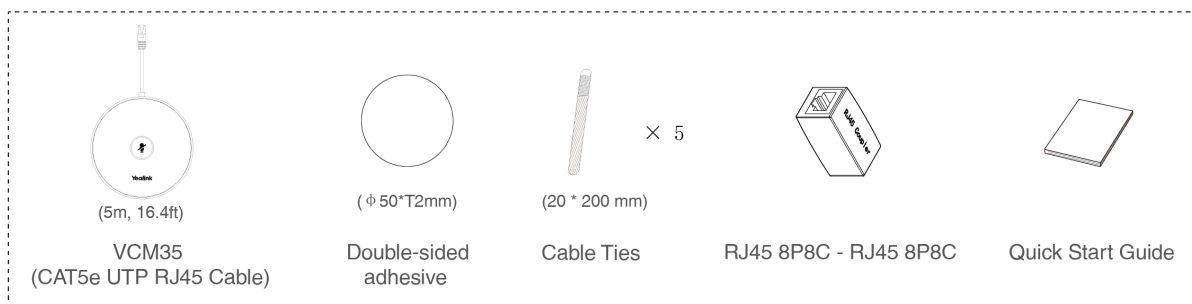
## UVC86 Package



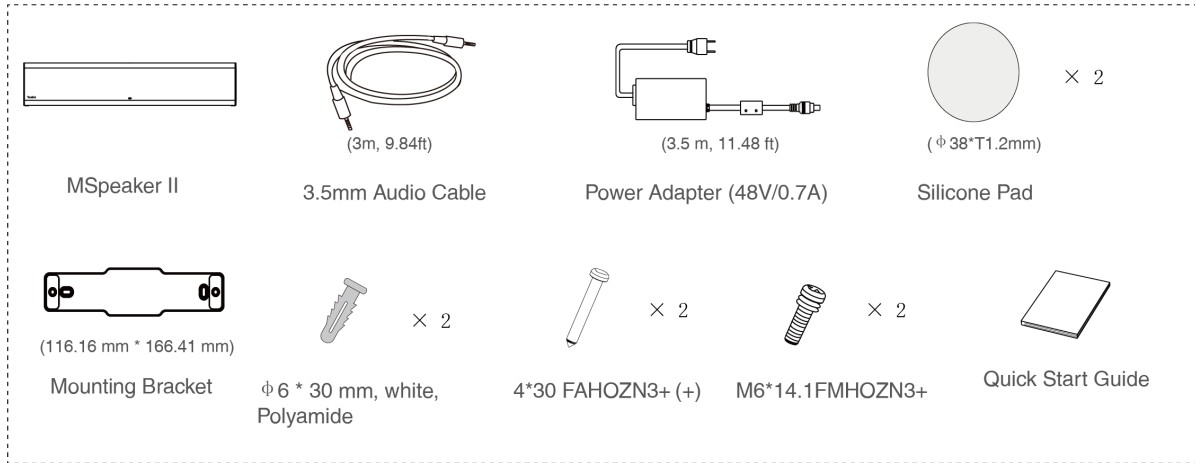
## MCore Pro Package



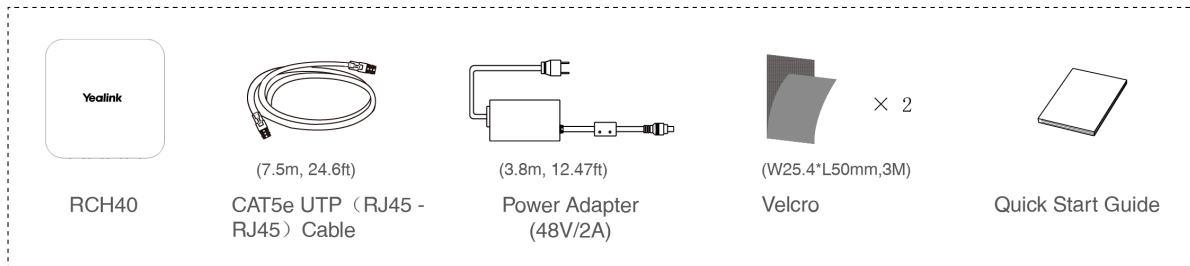
## MTouch Plus Package



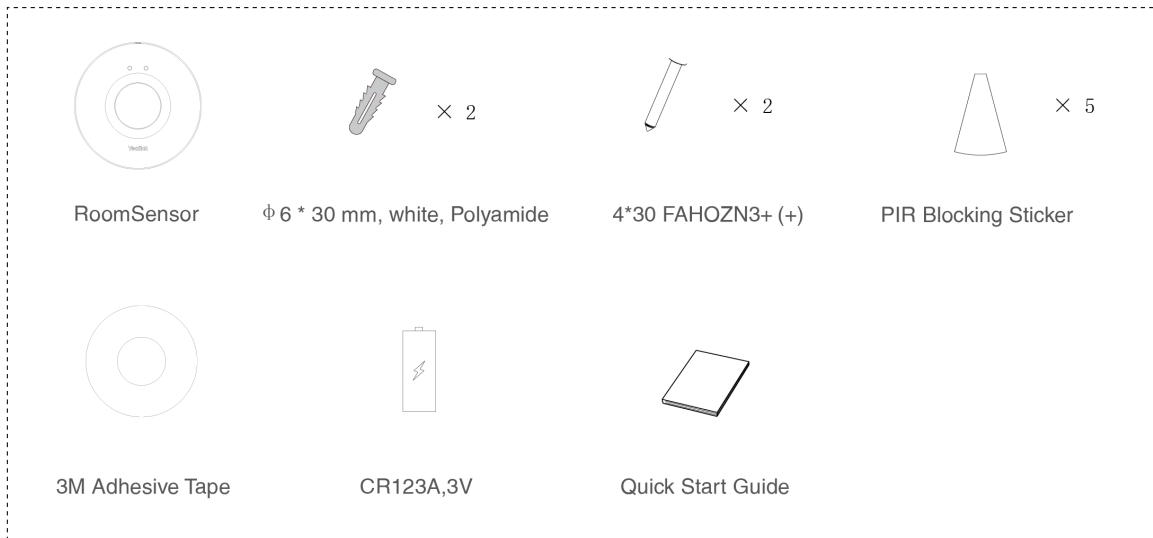
## VCM35 Package\*2



## MSpeaker II Package



## RCH40 Package



## RoomSensor Package



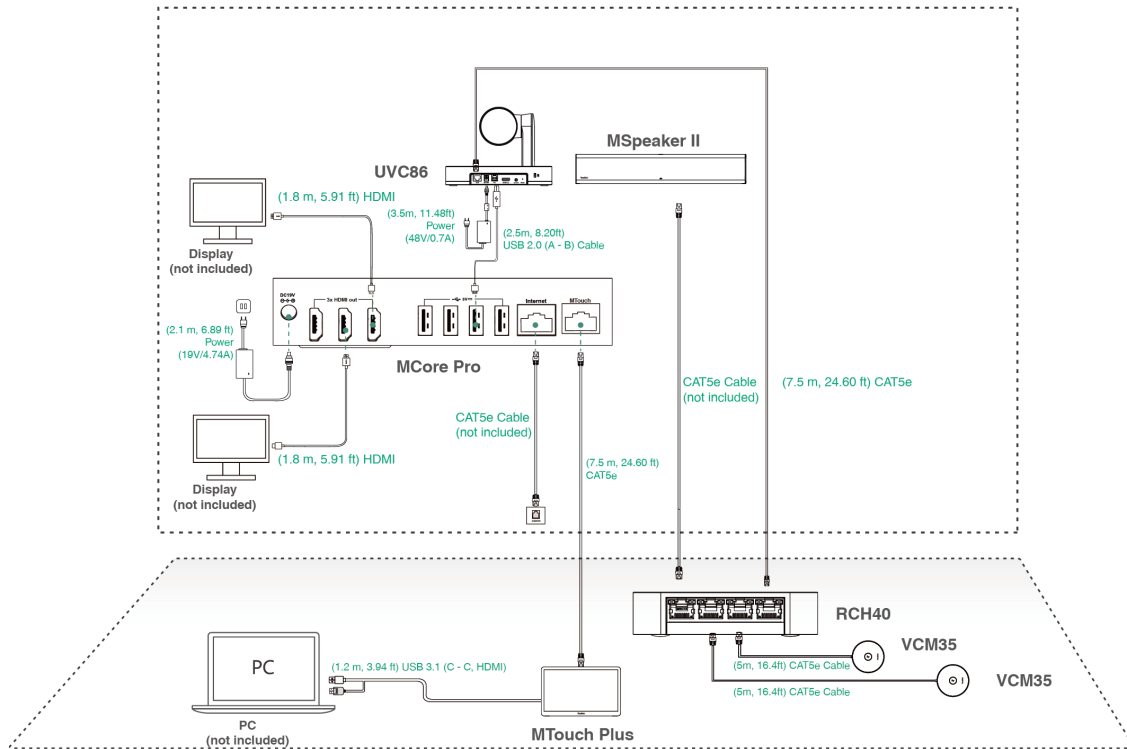
## WPP30 Package

### Install MVC860-C5-713

- MCore Pro supports: mount on the wall, mount on the TV, stick to the table.
- MTouch Plus supports: put on a table, paste on a table, fixed on a table, mount on the wall.
- UVC86 supports: put on a flat surface, mount on top of a display, mount on the wall, mount on the ceiling, mount on the TV mount.
- MSpeaker II supports: mount on a wall, stick to the table.
- RCH40 supports: put on the table, stick under the table, stick on the side of the table.

- RoomSensor supports: mount on the ceiling, mount on the wall.
- Install and deploy the accessories in the system according to the environment and actual needs. For how to install and deploy, please refer to the quick start guide of each product.

**Connect MVC860-C5-713**



**NOTE**

- Do not connect RCH40 to the Internet, otherwise it will cause network abnormalities.
- When starting up the system for the first time, you need to connect a mouse to complete the initial configuration. We recommend using the wireless mouse and keyboard kit.
- Not included accessories requirements:
  - Display: Resolution of 1080p or higher and with an HDMI port.
  - PC: Equipped with HDMI or USB-C (support DP protocol) Port.
  - Ethernet cable: CAT5e or higher ethernet cable.
  - HDMI: Standard HDMI cable.
  - PoE switch: If you use PoE to connect speakers or cameras, you need to use PoE+.

## Initial Setup

1. Press the power button on the bottom left of MCore Pro, and the Microsoft Windows 10 IoT Enterprise Edition operating system will be automatically loaded after starting MCore Pro.

**NOTE**

When starting up the system for the first time, you need to connect a mouse to complete the initial configuration. We recommend using the wireless mouse and keyboard kit. After the system is initialized, you can use MTouch E2 to complete the system login and settings, and the device will automatically start the Microsoft Teams conference system application and enter the setting page.

2. Select the check box on the **EULA** page, and then tap **Next**.
3. Enter the account, the password on the **Account** page, and then tap **Next**. Supports Microsoft Teams Rooms or Skype® for Business accounts.
4. On the **Advanced** page, configure the domain and tap **Next**.
5. Tap **Finish** to complete the setup wizard.

## Features

### Wireless Sharing

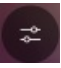
1. Connect the WPP30 to the USB port of the MTouch E2.

When pairing, the LED indicator of WPP30 is orange. When the pairing is successful, the LED indicator turns green breathing light.

2. Connect the paired WPP30 to the USB-A/USB-C port on your PC.
3. On the WPP30, press the presentation button to share the full screen.



### Control UVC86 Camera Position

1. Tap More >  to enter the Camera Control page.

### Pair with a RoomSensor

1. Switch account from Skype to Admin.
2. Open Yealink RoomConnect Software from Desktop.
3. Go to **MTouch Plus > Sensor**.
4. Add sensor. Select the right sensor to pair.

Remove the back cover of RoomSensor, you will see its name on the top. Then select accordingly.

#### **NOTE**

- A MTouch Plus can be paired with one RoomSensor at most.
- The distance between MTouch Plus and RoomSensor needs to be within 20m.

### Supported Accessories

For the compatible devices and the maximum number of compatible devices, please refer to [Teams Room](#)



Accessories Compatibility Lists.